

Primary Sources

1. **A Place of Light, The Story of a University Presidency**, Clarence R. Decker and Mary Bell Decker, 1954
2. ACM http://amturing.acm.org/award_winners/hartmanis_1059260.cfm
3. The Denver Post, Apr. 18, 2011 http://www.denverpost.com/breakingnews/ci_17874449
4. **50 Years of Texas Caving**, Carl E. Kunath, 2007
5. **Italian Women Past and Present**, Maria Castellani, 1939
6. Lehigh University http://www.lehigh.edu/engineering/about/alumni/bio_beer_f.html
7. MacTutor History of Mathematics Archive <http://www-history.mcs.st-and.ac.uk/history/BiogIndex.html>
8. MET <http://www.nctm.org/resources/content.aspx?id=14279>
9. NobelPrize.org http://www.nobelprize.org/nobel_prizes/chemistry/laureates/1996/smalley-bio.html
10. Professor's Philosophy Steeped in Practicality, Nov. 2, 1962, KC Star p. 6 Charles Hammer
11. **Rich White Folks: Growing Up Black in America**, Robert H. Randolph, 2011
12. Phys.org <http://phys.org/wire-news/67604035/print.html>
13. UMKC University Archives <http://library.umkc.edu/university-archives>

Contact Us

Researcher/Writer: Richard Delaware, Ph.D. delawarer@umkc.edu

October 2014 For more department history visit:

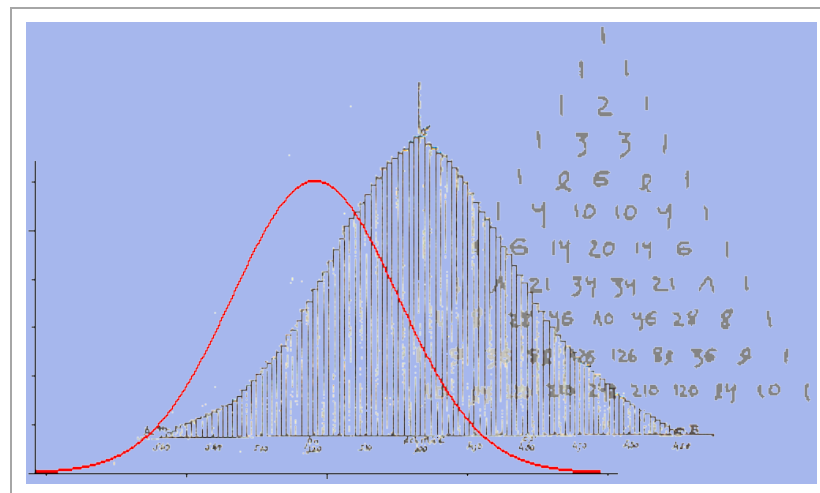
<http://d.web.umkc.edu/delawarer/MathDeptHistory.htm>

Department of Mathematics and Statistics cas.umkc.edu/mathematics/

UMKC, 5100 Rockhill Road, Kansas City, MO 64110

A Historical Dozen

Notable Mathematics Faculty & Students, Colorful Characters 1933-1993



DEPARTMENT OF MATHEMATICS AND STATISTICS
University of Missouri – Kansas City

Roster

William A. Luby Faculty and First Chair 1933-1946.....	1
Eric Temple Bell Visiting Professor Fall 1942	1
Ferdinand P. Beer Faculty 1943-1944.....	1
Maria Castellani Faculty 1946-1961	2
Norman N. Royall Jr. Faculty 1947-1975.....	2
Juris Hartmanis Graduate M.A. 1951.....	3
Yudell L. Luke Faculty 1955-1957 & 1961-1983	3
Robert H. Randolph Undergraduate B.A. 1959	4
Bennie J. Pearson Faculty 1959-1991	4
Shirley A. Hill Faculty 1963-1993.....	5
William R. Ward Undergraduate B.S. 1968	5
Mike Keefe Undergraduate B.S. 1973, Graduate M.S. 1974	5

• The University of Kansas City was dedicated on Oct. 1, 1933 (locally “KCU”), and in 1963 became the University of Missouri – Kansas City.

Abbreviations: AAAS = American Association for the Advancement of Science, AAS = American Astronomical Society, KU = University of Kansas, MAA = Mathematical Association of America, MCC = Metropolitan Community Colleges, NCTM=National Council of Teachers of Mathematics

Shirley A. Hill Faculty 1963-1993



MAA

1961 Ph.D. Math Education Stanford • 1964 text “First Course in Mathematical Logic” with P. Suppes • 1976 chair of the US Commission on Mathematical Instruction • **President NCTM 1978-80 • 1987 UM System Curator’s Professor • 1991 MAA Distinguished Service Award • 1992 Harold W. McGraw, Jr. Prize in Education (\$25,000) • 1994 Mathematics Education Trust Lifetime Achievement Award** (math education reform, rallied public support, prominent role in An Agenda for Action, and the 1989 NCTM Curriculum and Evaluation Standards for School Mathematics) [8]

William R. Ward Undergraduate B.S. 1968



SW Research

After UMKC, 1972 Planetary Sciences Ph.D. CalTech • Won the **2004 Brouwer Award** from the AAS Division on Dynamical Astronomy • In 2005 elected a Fellow of the American Geophysical Union and in 2006 a Fellow of the AAAS • UMKC Alumnus of Distinction 2006 • Won the **2011 Kuiper Prize in Planetary Sciences** of the American Astronomical Society as scientist in the Planetary Science Directorate at Southwest Research Institute, for lifetime achievements and pioneering theories on how planets form and evolve; previous recipients include Carl Sagan, James Van Allen & Eugene Shoemaker [12]

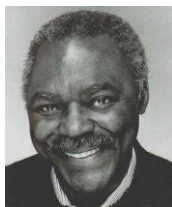
Mike Keefe Undergraduate B.S. 1973, Graduate M.S. 1974



The Denver Post

In the 1970s drew his first editorial cartoon for the U-News • 1975, became editorial cartoonist for *The Denver Post* staying 36 years • Appeared in *Time*, *Newsweek*, *US News & World Report*, *The New York Times*, *USA Today*, *The Washington Post* and in over 800 world newspapers • **2011 Pulitzer Prize for Editorial Cartooning** citing his “loose, expressive style to send strong, witty messages” [3]

Robert H. Randolph Undergraduate B.A. 1959



Randolph

During his freshman year 1955-1956 there were about 15 Blacks out of 2,400 KCU students • In 1959, moved to Los Angeles, CA and after 1 ½ years took a computer programming course at LA City College for \$2.50 • First professional job as a math analyst at Douglas Aircraft Co. & later as programmer in the Apollo Programming Department • In 1963 went to Seattle, WA to a Boeing

Company task force implementing a key phase of the **Lunar Orbiter Project**, leading to the first maps of the moon's surface in preparation for the 1969 first moon landing • Moved to Digital Equipment Corp.'s Seattle office, where he supplied **Bill Gates** computer instruction manuals to help him better understand interactive computer systems • Promoted to Digital's Senior Management, later to Boston as a Senior Product Manager in its Large Computer Group • In 2011 published a memoir "**Rich White Folks: Growing Up Black in America**" about his life and times in KC, at Lincoln High School, and at KCU in the 40's and 50's • International Computer Industry Analyst and Consultant [11]

Bennie J. Pearson Faculty 1959-1991



KCU Yearbook 1962

Charter 1951 student member of the Texas University Speleological Society • 1955 Ph.D. University of Texas at Austin • **28th student of R. L. Moore** (see full MacTutor biography [7]) whose inquiry-based way of teaching encouraged students to have confidence; well-known Moore student **Mary Ellen**

Rudin wrote: "I probably would not be a mathematician had I not worked with Moore" • Texas, US, and Mexico caving (spelunking) [4] • Chair 1961-66 • 5 UMKC Ph.D. students



Fisher's Pit TX 1953

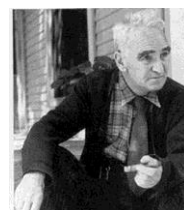
William A. Luby Faculty and First Chair 1933-1946



KCU Yearbook 1937

Johnson County, KS "farm boy" • M.A., KU 1920 • Co-author of successful **high school "Hawkes-Luby-Touton" Algebra & Geometry texts** 1909-1956 • KC Polytechnic Institute Head (later Junior College of KC; now the MCC), then KCU department Chair • MAA MO section chair 1927-1929 • Taught Astronomy, wrote for *Popular Astronomy* and *University Review* (today: *New Letters*) • Co-founded 1935 KCU Delta X student math club [13]

Eric Temple Bell Visiting Professor Fall 1942



MacTutor Website

Scottish • CalTech professor • Ph.D. Columbia 1912 • MAA president 1931-33 • Author of popular classics: **Men of Mathematics (1937)**, **The Development of Mathematics (1940)**, **Mathematics: Queen and Servant of Science (1951)** • Full MacTutor biography [7] • At KCU, course of 20 daytime lectures on "The Influence of Mathematics on Philosophy" & eight evening lectures for townspeople and part-time students; "Bell is a sardonic iconoclast, hating all bunkum, gunning for all philosophers... [his] lectures are masterpieces - clean-cut, no furry edges ..." [1]

Ferdinand P. Beer Faculty 1943-1944



Lehigh University

French • Ph.D Univ. of Geneva 1937 • After KCU, three best-selling **"Beer & Johnston" mechanics texts** for engineers still used in engineering classes around the world • At Lehigh University Chair 1947-1967 of mechanics department, then chair to 1977 of mechanical engineering and mechanics department • 1980 **Distinguished Educator Award** from the Mechanics Division of the Science Society • 1995 **Honorary Doctor of Engineering**, Lehigh Univ. [6]

Maria Castellani Faculty 1946-1961



KCU Yearbook 1948

Italian • Doctorate 1923 University of Rome • Italian Scholar in Mathematics Bryn Mawr 1923-1924 • Head of League of Nations Accounting Office, Geneva • 1930s President of Mussolini's National Fascist Association for Women Artists and Graduates • VP of International Federation of Business & Professional Women • Wrote "[women]... should strive

incessantly to develop the best that is in us so that we may help to build a better and nobler world." [5] • MAA MO section chair 1955 • **KCU Lena Haag Chair in Mathematics 1957** • 11 thesis M.A. students 1950-1958, including **Juris Hartmanis** (below) • **Robert H. Randolph** (below) says: "The words of Dr. Maria Castellani have been the linchpin of my long and varied career (and life). [She] often regaled our small group of Mathematics students with the mantra – 'Mathematics is a way of thinking.'" [11] • After KCU, chair, Fairleigh Dickinson Univ. Dept.

Norman N. Royall Jr. Faculty 1947-1975



KCU Yearbook 1963

Entered John B. Stetson University at 15, Ph.D. 1940 Brown University • **College of Arts & Sciences Dean 1947-1953** • 1961 created **49 30-min. films**, US Armed Forces Institute for military bases worldwide (College Algebra, Trig., & the Slide Rule) • "Founder and first director of the Great Books program ... one of the intellectually moving forces in Kansas City" [10] •

Wrote 3 College Algebra & Analytic Geometry texts 1963-1971 • **1974 UM System Thomas Jefferson Award** • 1983, "Royall Hall" named for him • Richard E. Smalley (1996 Chemistry Nobel Prize) wrote [9]: "My interest in Science had many roots. Some came from my mother ... particularly as a result of classes on the Foundations of Physical Science taught by a **magnificent mathematics professor** at [KCU], Dr. Norman N. Royall, Jr. I was infected by this professor second hand..."

Juris Hartmanis Graduate M.A. 1951



Assoc. of Computing Machinery (ACM)

Latvian • After KCU, CalTech Ph.D. 1955 • Research mathematician at General Electric Research Laboratory • Won the **1993 A. M. Turing Award** with Richard E. Stearns, for their seminal 1965 paper which set the foundations for the field of computational complexity theory and sparked the imagination of many computer scientists • Helped establish computer science as a formal discipline distinct from mathematics, physics and electrical engineering • 1999 UMKC honorary Doctor of Humane Letters • **2013, elected to the National Academy of Sciences** • Currently Walter R. Read Professor of Computer Science and Engineering, Emeritus, Department of Computer Science, Cornell University [2]

Yudell L. Luke Faculty 1955-1957 & 1961-1983



MacTutor Website

KC Junior College A.A. 1937 • M.A. 1940 University of Illinois • Special functions, asymptotic analysis, and approximation theory • Starting 1946, **Midwest Research Institute**; Several of his MRI research students matured into well-known research mathematicians: J. Wimp, W. Fair and J. L. Fields • 100 papers and 8 books during a highly distinguished career, including **The Special Functions and their Approximations** (1969), **Mathematical Functions and their Approximation** (1975), **and Algorithms for the Computation of Mathematical Functions** (1977) • Full MacTutor biography [7] • Set up the Visiting Lecturer Program for the Society of Industrial and Applied Mathematics • 1975 won a **UMKC N. T. Veatch Award for Distinguished Research and Creative Activity** • **1978 UM System Curator's Professor** • Died Moscow 1983 after giving an exchange program series of lectures